



# Hire Catalogue

Smith Brothers Stores in partnership with:

☎ 0844 892 1902  
@ sbs.hirestation@vpplc.com



## MEP Hire

Mechanical, Electrical & Low Level Access Specialists

# A Partnership You Can Trust To Deliver

## Hire With Us...

---



### Hire Desk

We are open from 7.30am until 5.00pm Monday to Friday. Call or email us with all your hire enquiries.

Tel: 0844 892 1902  
Email: [sbs.hirestation@vpplc.com](mailto:sbs.hirestation@vpplc.com)



### Set up an Account

We've made setting-up an account with us really easy. Simply scan the QR code below.



### Our Partnership

Through our partnership, we can support you to improve your safety standards, with hire equipment that will increase your productivity and efficiency.



# Icon Key

Look out for these icons throughout the catalogue for quick and easy reference.

## Sectors



Commercial  
Fit-out



Electrical  
Contractors



Fire  
Protection



Heating, Ventilation  
& Refrigeration  
(HVAC)



Mechanical  
& Plumbing



Utilities &  
Fabricators

## Key Features



Ideal for  
Compact Spaces



Cordless



Green  
Option



Health & Safety  
Approved



Innovative  
Solution



Ideal for  
Quiet Spaces

# Contents

About Smith Brothers Stores (SBS)	04
About MEP Hire	05
Our Customer Journey	06
National Coverage (MEP Branches)	07
Hire With Confidence	08
Vp plc	09
Working At Height	10
<b>Sectors &amp; Products</b>	
Commercial Fit-out	16
Electrical Contractors	18
Fire Protection	20
Heating, Ventilation & Refrigeration (HVAC)	22
Mechanical & Plumbing	24
Utilities & Fabricators	26
<b>Health &amp; Safety Guidance</b>	<b>28</b>
<b>SBS Branches</b>	<b>31</b>

A trusted and recognised hire partnership...



# About **Smith Brothers Stores (SBS)**

Smith Brothers is the oldest and largest family-owned commercial HVAC merchant operating within the UK, focusing on supplying the commercial and industrial mechanical services sector.

The business specialises in the distribution of pipework, valves and air conditioning, along with all associated fittings and ancillaries. Smith Brothers has extensively increased its product portfolio and geographical coverage since the turn of the millennium. With branch coverage across the spine of England, Scotland and Wales, including a Head Office based in Leicestershire, they are able to meet customer service commitments, the brand promise since 1897. SBS should be the number one choice for the mechanical services contractor that relies on quality of service combined with competitive pricing.

SBS can offer added value over its competitors in a multitude of ways by drawing from close relationships with carefully selected and quality assured suppliers and by maintaining excellent stock levels at all branches, thus reducing supplier lead times. In turn, they can provide unrivalled levels of service along with competitive pricing.



Through the development of our people and product range, with the support of our suppliers, shareholders and parent company, **we shall maintain our desire to surpass our customer's expectations with a level of service that will continually add value to their changing needs...**

**Steve Smith**  
Managing Director

The investment strategy for sustainable growth, along with commitment to the branch expansion programme and product range development, are just some of the reasons behind the unprecedented success of the business, resulting in turnover increasing to around £200 million per annum today.



## About MEP Hire

As a member of Vp plc, we are part of a multi-national group with nine operating divisions, providing the rental and sale of specialist products and associated services within the UK and overseas.

With a rich history spanning over 65 years, MEP Hire is uniquely positioned to ensure continued investment in our fleet and network. This allows us to offer our customers the most innovative and quality hire solutions available.

### Why Choose Us?



**A reputation built-on quality, service and reliability.** Our staff are truly experts in what they do, which means they are best-placed to advise you on the right solutions to achieve your goals. Our engineers and examiners are both LEEA and IPAF CAP certified and fully-equipped to carry out on-site repairs.



**National network of 13 branches across the UK,** making us best placed to deliver your hires when, and where, you need them.



**One of the most comprehensive, youngest and best-maintained fleets in the industry;** helping you to stay on-track with quality hires, every time.



**Champions of innovative products.** We bring you access to the latest solutions on the market – all designed to improve your safety and increase your productivity.



**Supporting small-scale projects to landmark sites.** We provide expert support and guidance from the very start of a project, through to completion. Our on-site Toolbox Talks and familiarisations will ensure you can be proficient using our equipment quickly, allowing you to tackle your tasks confidently and effectively. We can also arrange in-house IPAF and PASMA training on your behalf.



**FORS Gold Certification across our entire network.** We have demonstrated best practice across several areas of operations and fleet management, including; fuel efficiency, noise reduction, road risk, driver training and wellbeing, as well as communication.



**Committed to Net Zero.** As part of the Vp Group, we have pledged to achieve our Net Zero goals by 2050.

# Our Customer Journey

Adding Value At The Heart Of Your Business...



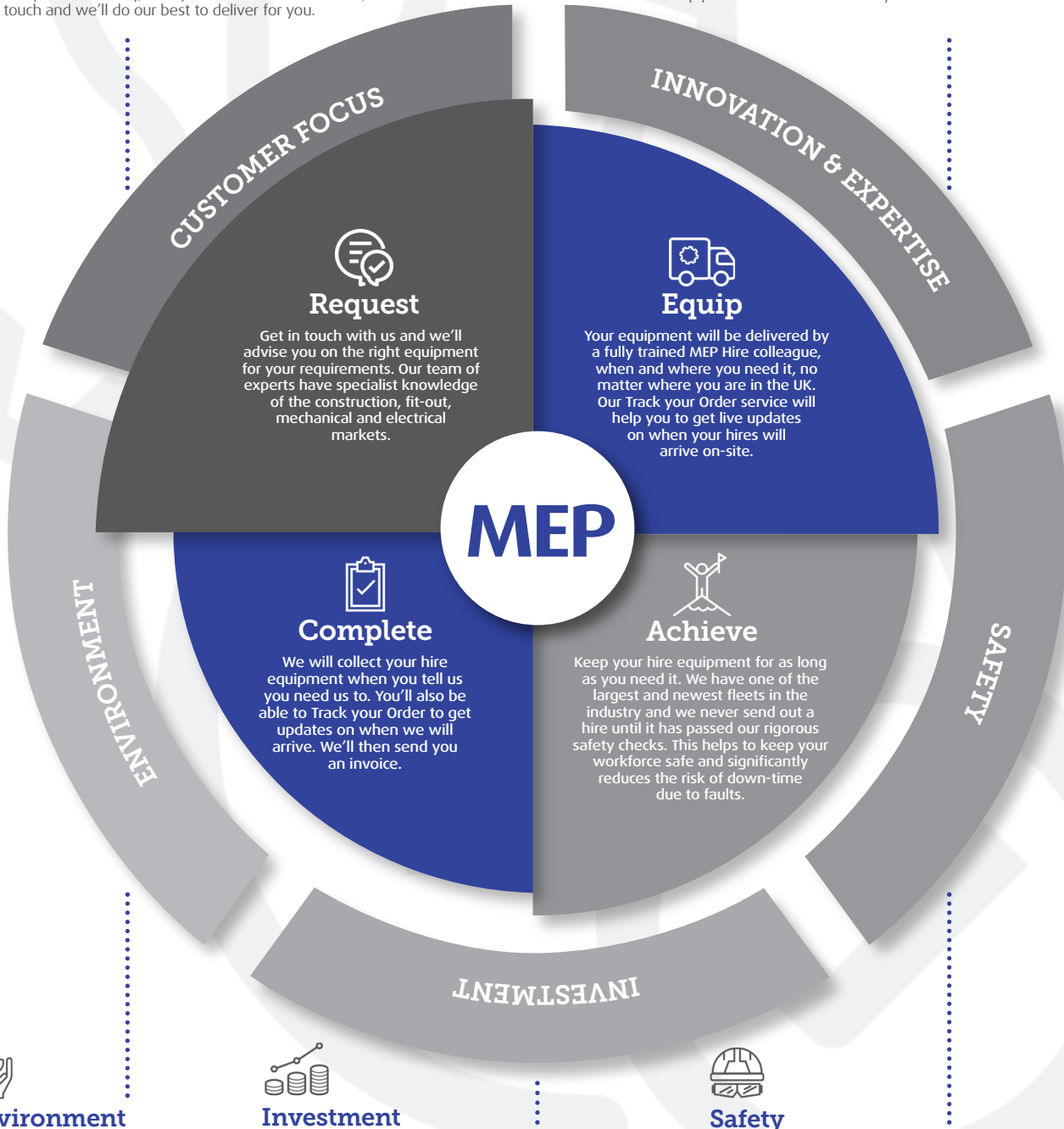
## Customer Focus

We have put your needs at the very heart of our business. With coverage across the UK, and one of the largest and best maintained fleets in the industry, we pride ourselves in not only meeting, but exceeding your expectations. We're confident that we can find whatever you need to get the job done safely and efficiently, so if you can't see it in our fleet, get in touch and we'll do our best to deliver for you.



## Innovation & Expertise

We pride ourselves in the specialist knowledge, expertise and skills that we have built-up within our business. Our experts can help to ensure you have the right solutions, whatever your needs. We have close partnerships with manufacturers and we listen to what our customers tell us. This enables us to help develop products that better meet your needs.



## Environment

We are aware of the impact our business has on the environment and it is our aim to ensure that we minimise any adverse impacts from our operations.



## Investment

As part of the Vp Group, MEP Hire has a history spanning over 65 years. We are uniquely positioned to ensure that we can continue to invest in our fleet and network, enabling us to offer our customers the most innovative and quality hire solutions on the market.



## Safety

We understand what your Health & Safety obligations are and can advise you on equipment that will help to reduce injury, whilst improving your productivity. Our dedicated service engineers are fully equipped to carry out on-site repairs. We can also arrange in-house IPAF and PASMA training for your colleagues.



# National Coverage

With thirteen locations spread across the UK, we have truly national coverage.

## MEP Hire Head Office

Unit K, Ashley Drive, Bothwell  
Glasgow G71 8BS

T: 0800 587 5121

E: hire@mephire.co.uk



### MEP HIRE ABERDEEN

Unit C6, Kintore Business Park,  
Kintore, Aberdeen AB51 0YQ  
T: 01224 444 195  
E: mephireaberdeen@vpplc.com

### MEP HIRE BIRMINGHAM

Unit 1 Alpha Park, Bevan Way,  
Smethwick B66 1BZ  
T: 01216 618 001  
E: mephirebirmingham@vpplc.com

### MEP HIRE BRISTOL

Unit B, St Vincents Trading Estate,  
Feeder Road, St Philips, Bristol BS2 0UY  
T: 01173 380 160  
E: mephirebristol@vpplc.com

### MEP HIRE BURTON

Unit A, Rolleston Trading Estate,  
Hawkins Lane, Burton-on-Trent  
DE14 1PT  
T: 01283 530 777  
E: mephireburton@vpplc.com

### MEP HIRE CARDIFF

Unit 5 Riverside, Treforest  
Industrial Estate, Pontypridd  
CF37 5TG  
T: 02921 507 810  
E: mephirecardiff@vpplc.com

### MEP HIRE DURHAM

Greta House, Unit 36,  
Belmont Industrial Estate,  
Durham DH1 1TT  
T: 01913 841 384  
E: mephiredurham@vpplc.com

### MEP HIRE EDINBURGH

Unit 6A, Pitreavie Business Park,  
Pitreavie Way, Dunfermline,  
Fife KY11 8UX  
T: 01383 452 020  
E: mephireedinburgh@vpplc.com

### MEP HIRE GLASGOW

Unit K, Ashley Drive, Bothwell,  
Glasgow G71 8BS  
T: 01698 811 114  
E: mephireglasgow@vpplc.com

### MEP HIRE LEEDS

Unit 2D, Elland Road Industrial  
Estate, Leeds LS11 0EY  
T: 01132 211 190  
E: mephireleeds@vpplc.com

### MEP HIRE MANCHESTER

Unit 2000, Fifth Street,  
Trafford Park, Manchester  
M17 1JX  
T: 01619 046 200  
E: mephiremanchester@vpplc.com

### MEP HIRE RAINHAM

Unit 5, Consul Avenue,  
Segro Industrial Park, Rainham,  
Essex RM13 8HY  
T: 020 8104 3140  
E: mephirerainham@vpplc.com

### MEP HIRE SITTINGBOURNE

Unit 11D, Dolphin Park,  
Cremers Road, Eurolink,  
Sittingbourne, Kent ME10 3HB  
T: 01795 402 130  
E: mephiresittingbourne@vpplc.com

### MEP HIRE STAINES

Apex 30, 233-269 London Road,  
Staines TW18 4JU  
T: 01784 608 960  
E: mephirestaines@vpplc.com

We are a FORS Gold Certified business demonstrating best practice in fleet management, including; fuel efficiency, noise reduction, road risk, driver training and wellbeing, as well as communication.



# Hire With Confidence

## Tracking your Order



Our drivers will provide **Proof of Delivery** and **Proof of Collection** with every hire, including taking pictures of items delivered and off-hired to site.

We can also provide you with regular order **status updates via SMS** and our **Track your Order** portal will keep you updated as to when we will arrive to deliver or collect your hires.

## Safety & Compliance



We put **safety** and **compliance** at the very heart of our business to ensure the equipment we hire out is safe to use and will be compliant with all associated safety checks.

With this in mind, our hire agreement with you covers the following:

- Innovative corerfid process for LOLER Thorough Inspections and Certification
- Trained and accredited inspectors to meet IPAF CAP (Competent Person) and LEEA Standards.



**LOLER**



core|rfid

**Protect accidental scheme:** We provide an accident scheme to give you peace of mind that no additional charges will be made should accidental damage occur to your hire equipment. Further details are available at the point of hire.

## Corporate Social Responsibility



As part of our Roadmap to Net Zero, we have already reduced our water consumption and switched to 100% renewable electricity across our sites.

We have also pledged to optimise fleet management initiatives in order to reduce the impact this has on the environment, as well as implementing other strategies to support local engagement with conservation projects. You can find out more at: [www.vpplc.com/csr](http://www.vpplc.com/csr)

We are also pleased to partner The Inter Group on the creation of this brochure who are able to offer carbon balanced paper which has been offset by direct action through the World Land Trust.



Proud To Be A Part Of The

# Vp plc Group Of Businesses



Airpac Rentals Energy Industry Solutions is an international business supporting a wide range of oil and gas markets, servicing well test, pipeline testing, rig maintenance and LNG markets worldwide.



Brandon Hire Station is a leading provider of tools and specialist rental products to industry, construction and home owners across the UK.



ESS is a specialist provider of safety, survey, communications and test and measurement equipment.



Groundforce is the market leading rental provider of excavation support systems and specialist products for the water, civil engineering and construction industries.



MEP Hire provides mechanical, electrical, press-fitting and low level access products to the UK's building services trades.



Specialist suppliers of rail infrastructure portable plant and related trackside services.



TPA Portable Roadways is one of Europe's largest suppliers of temporary access solutions.



TR is Australasia's leading technical equipment rental group providing test and measurement, communications, calibration and audio visual solutions.



UK Forks is one of the UK's leading specialist hirers of telescopic handlers and tracked access platforms.



# Working At Height

**Minimise Your Risks;  
Improve Your Productivity**

## **Why Choose Low Level Access (LLA)?**

The Working at Height Regulations 2005 aims to prevent death or injury caused by falls from height. Choosing the right equipment to support compliance, whilst improving productivity is easy with our LLA range.





## The Benefits Of LLA



### Safe

Our entire range has been designed to be the safest possible way of working at heights.

Features include: fail-safe mechanisms, 'anti-surf' locking wheels, auto-brakes, safety gates and guards, as well as MEWP tags.



### Quick & Simple

Our LLA range is easy to use and much faster than traditional ladders or podiums to erect. In fact, the Pecolift takes just 11 seconds to reach full elevation.



### Efficient

Our machines will help you to reduce the time it takes to complete tasks and increase your productivity. Our self-propelled machines can be operated whilst elevated, so are superb at completing repetitive tasks across a large area or site.



### Reliable

Our machines are tested and calibrated after each hire. This means you only receive equipment that is ready for the job. Our non-powered access machines are battery and electric free so avoid any downtime whilst charging batteries.



### Versatile

We offer a wide range of machines to suit multiple applications and working heights of up to 6.5 metres. Our machines are designed to fit through standard doorways and in most passenger lifts and have non-marking tyres, suitable for use on finished floors.



### Cost Effective

Our machines have been designed for versatility and can be used for multiple applications. This helps you to manage your costs and maximise usage of hire equipment. We allow you to continue to hire our equipment for as long as you need it.



### Sustainable

Our range includes machines that are non-powered, self-propelled and low noise; making them the sustainable and environmentally friendly choice.



# Safety Comes First...

All users must have the appropriate training to operate LLA machines and we can help you to access this training if you need it. Our staff hold IPAF Demonstrator Licences and delivery staff can provide a Machine Familiarisation Service.

Each of the machines in our fleet goes through rigorous safety checks, including the LOLER examination. This ensures our machines are always compliant to the latest regulations and will keep your operators safe.

We offer additional safety features for many of our access machines, making them the safest in the market. These include: MEWP tags, anti-climb guards and tool tethering options.



**L.O.L.E.R.**



# Working Safely At Heights

Save lives and improve your productivity with our robust, tried and tested range of safe-guarding and tool tethering options.

**Working at height remains a significant risk to the UK's construction trades.** In fact, falls from height account for 50% of fatalities in the construction sector.\* By utilising MEP Hire's extensive LLA fleet, alongside our unparalleled experience and expertise, you can start to reduce the risk of injury and fatalities and the burden this has on your employees, as well as your business.

Dropped tools continue to pose a significant hazard for injury and fatalities. We can provide you with access to a wide range of tool tethering solutions designed for excellent performance, tested in the harshest environments and approved by the most demanding health and safety professionals.

Our LLA machines have the option of coming with integrated anti-climb and tool tethering solutions. These are manufacturer approved and are designed to increase safety awareness and culture, whilst reducing the possibility of injury. Additionally, Our MEWP tags help to increase proper usage of our range of access machines.



Tool tethering



MEWP tags



Anti-climb guards

## Tool Tethering

**A simple system to secure every tool at height...**



### Tether Point

Create a secure attachment point on the tool.



### Tool Lanyard

Choose the best tool lanyard for your task.



### Anchor Point

Select between wristband, belt, harness or fixed point.



### Storage

The most advanced tool safety bags and storage equipment designed for working at heights.

\*Source: HSE, Construction Statistics in Great Britain, 2021

# Our LLA Range

We offer a wide range of machines to help you work safely at heights from 3.5 - 6.57 metres\*, here's just a few of them...

\*Working heights



Hire Code	020029 / 020035	020056	020036 / 020048	020018 / 020025	020019 / 020042
Operated by	Self-powered	Self-powered	Self-powered	Battery	Battery
Maximum working height	3.5 m	4.1 m	4.2 m	4.5 m	4.5 m
Maximum platform height	1.5 m	2.1 m	2.2 m	2.5 m	2.5 m
Platform size (LxW)	720 x 600 mm	680 x 590 mm	850 x 644 mm	1000 x 730 mm	1500 x 720 mm inc. cantilever
Working footprint (LxW)	985 x 700 mm	1200 x 700 mm	1280 x 700 mm	1119 x 750 mm	1119 x 750 mm
Closed dimensions (LxWxH)	985 x 700 x 1550 mm	1200 x 700 x 1680 mm	1280 x 700 x 1940 mm	1195 x 750 x 1560 mm	1200 x 750 x 1590 mm
Weight	180 kg	274 kg	305 kg / 315 kg	285 kg	478 kg
Maximum load	150 kg	125 kg	150 kg	200 kg	200 kg
Person operation	1 person	1 person	1 person	1 person	1 person
Maximum gradient	0°	0°	0°	0°	1.8°
Indoor/outdoor use	Indoor	Indoor	Indoor	Indoor / Outdoor	Indoor/Outdoor
Time to reach full height	11 seconds	20 seconds	15 seconds	20 seconds	20 seconds
Safety features	Auto-braked on entering basket Auto-lock on elevation Dead Man's handle Fail to safe lifting mechanism	One hand full length gates Tool tray with tether facility Platform travel lock	Auto-lock on elevation Dead Man's handle Fail to safe lifting mechanism	Fail to safe hydraulic circuit Heavy-duty auto-lock wheels Emergency descent from ground level Audible ascent and descent drive alarm Tool tray with Nano Plus	Fail to safe hydraulic circuit Automatic pothole protection on elevation Tilt sensor complete with alarm and cut-out Auto basket load sensing and parking brake Automatic elevated drive-speed reduction
Additional safety features available	Anti-climb guards Tool tray Tool tethering MEWP Tag	Tool Tethering MEWP Tag	Anti-climb guards Tool tray Tool tethering MEWP Tag	Tool tray MEWP Tag Telematics	Tool tray MEWP Tag Telematics



5 m

Pop Up IQ Pro 10  
Scissor Lift

5 m

Snorkel 3010P  
Scissor Lift

5.1 m

Power Towers  
Push Around  
Mast Lift

5.4 m

BOSS PA  
Scissor Lift

6.3 m

Genie  
Scissor Lift

6.57 m

JLG Micro  
Scissor Lift

020012	020070	020009	020039	020054	020055
Battery	Battery	Battery	Battery	Battery	Battery
5 m	5 m	5.1 m	5.4 m Indoor / 4.6 m Outdoor	6.3 m Indoor / 5.66 m Outdoor	6.57 m Indoor / 5 m Outdoor
3 m	3 m	3.1 m	3.4 m Indoor / 2.6 m Outdoor	4.3 m Indoor / 3.66 m Outdoor	4.57 m Indoor / 3 m Outdoor
1010 x 520 mm	1100 x 520 mm	1520 x 750 mm	1280 x 630 mm	1400 x 770 mm	1430 x 760 mm
1200 x 750 mm	1200 x 750 mm	1600 x 780 mm	1280 x 760 mm	1400 x 770 mm	1430 x 760 mm
1200 x 700 x 1800 mm	1200 x 750 x 1800 mm	1600 x 780 x 1850 mm	1280 x 760 x 1760 mm	1400 x 770 x 1880 mm	1430 x 760 x 1900 mm
370 kg	370 kg	342 kg	375 kg	900 kg	880 kg
240 kg	240 kg	250 kg	250 kg	227 kg	226.8 kg
1 person	1 person	1 person	1 person	2 person Indoor 1 person Outdoor	1 person
0°	0°	0°	0°	0°	3°
Indoor	Indoor	Indoor	Indoor / Outdoor	Indoor / Outdoor	Indoor / Outdoor
20 seconds	19 seconds	30 seconds	23 seconds	20 seconds	25 seconds
Saloon safety gates Anti-surf autobrake Emergency lowering lever Intelligent safety and monitoring Audible descent alarm Tilt sensor Fail to safe hydraulic circuit Hands protected	Auto-brake system, tilt sensor Saloon-door style entry gates Emergency lowering system	Fail to safe hydraulic circuit complete with check valve on lift cylinder Improved heavy-duty auto- lock wheels on elevation Emergency descent from ground-level Audible ascent and descent drive alarm Option to include confined space handrail	Tilt and overload warning lights, alarm, and interlocks Overhead obstruction detection with alarm frequency increase and interlocks Tilt sensor Single stage emergency descent	On-board diagnostic system with battery indicator Dual front wheel electric brakes Lift connect telematics Platform load sense system and control guard Electric horn and alarms	Direct electric drive system All motion alarm Dynamic braking Horn Load sensing system Tilt alarm and light
MEWP Tag Telematics	MEWP Tag Telematics	MEWP Tag Telematics	MEWP Tag Telematics Anti-entrapment	MEWP Tag Safe Rack MHA Telematics	MEWP Tag Telematics





# Commercial Fit-out

**We have supported some major projects in the commercial fit-out sector, including work on offices, data centres and retail units.**

Our focus is safety and productivity and we can support you to identify the best solutions for your projects' requirements. So, whether you need access machinery or innovative ideas for moving materials around site, then we can help with:

- LLA
- Lighting and power
- Dust and noise reduction
- Materials handling
- Site storage and security
- HVAC.

## Feature Products...



### Key Features

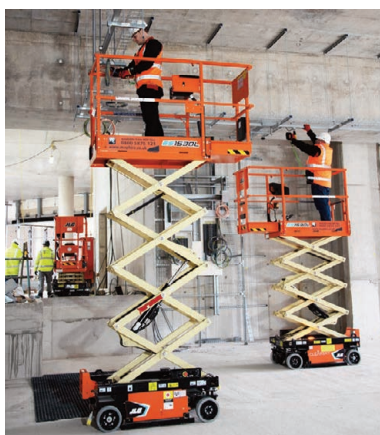


## Auto-braked Panel Trolley

**Hire Code: 310160**

Designed to enable safe, secure and easy transfer of goods and materials around site.

- Safe working load of 2000 kg
- Two person operation
- Automatically brakes when stationary
- Conveniently located anchor points to secure load
- Compact footprint; fits commercial lifts
- Stackable for transport to site
- Forklift slots.



### Key Features



## Micro Scissor Lift

**Hire Code: 020055**

Reach working heights of up to 6.5 metres safely and efficiently. Lightweight and easily manoeuvrable, this machine is suitable for both indoor and outdoor use.

- Highly manoeuvrable – easily fits through standard doorways and personnel lifts, weighing just 880 kg
- Direct Electric Drive system ensures improved efficiency through increased run times and reduction in faults
- Unique Variable Lift Technology enables you to work at greater inclines (up to 3%), whilst the machine display offers guidance on what is safe
- Access handling information and guidance directly from the machine, allowing operators to become confident quickly.



### Key Features



## Heavy-Duty Work Bench and Vices

**Hire Code: 310079**

A flexible and safe working and storage solution for securing tools on-site, featuring two vices - 100mm material vice and 150mm pipe vice. This handy workbench has been designed to make manual handling safer, as well as improving efficiency and productivity.

- 150 mm rubber tyres with lockable swivel castors for ease of movement
- Welded construction with industrial powder-coated finish for durability
- Fixed shelf brackets and heavy duty steel shelf for superior load bearing capability
- Cable entry hole for internal charging and secure lock
- Anchor points 'tie down and tether' for fork lift access slots
- Load tested to 500 kg
- W: 1230 mm x D: 600 mm x H: 910 mm



### Key Features



## MiTower Alloy Tower

**Hire Code: 020112**

This quick assembly access tower provides a safe and convenient working platform for up to two people.

- Reach heights of up to 6 m
- Less than 15 minute assembly time
- Can be assembled by one person
- 1.5 m long platform
- EN1004 Class 3 compliant.





# Electrical Contractors

**We have been providing hire tools to the electrical sector for over 20 years.**

It's not just about hire tools; we can provide you with guidance, surveys, support, tool familiarisation and training.

We carry all the top brands, in the latest technology, to help you to install, crimp and cut electrical cables. We can also support your access needs to ensure you comply with your health and safety obligations.





## Feature Products...



### Cable Cutting and Crimping

A wide range of cable crimping tools are available, suitable for multiple electrical settings. Easily portable and designed to maximise efficiency and productivity.



### Pipe Cutters

We stock an extensive range of cutters, covering a wide range of sizes and common materials used across UK construction.



#### Key Features



### Pecolift Plus

**Hire Code: 020035**

Battery and electric power-free, the Pecolift Plus reaches heights of up to 3.5 metres and is elevated by simply rotating a handle. Safer and more productive than the standard Pecolift machine, the Pecolift Plus incorporates a uniquely designed tool and fixings tray, along with additional guardrails.

- Elevates to 3.5 m
- Maximum load of 120 kg
- Lightweight and compact for easy manoeuvrability
- Reduces risks from dropped tools
- Eliminates platform clutter from deck, preventing trip and sprain hazards.



#### Key Features



### Cordless Conduit Pipe Threader

**Hire Code: 250181**

Ready to use anywhere on-site without the need for an additional vice. Li-Ion 22 V battery included.

- Quick to use; increases productivity
- Significantly reduces installation times
- Reduces wastage
- Compact and easy to manoeuvre
- Includes vice for securing pipe when cutting or screwing.



# Fire Protection

**With a high-level of experience within the fire protection sector, we offer an extensive range of specialist products to install, test and maintain complex fire protection and sprinkler systems.**

We provide best in class tools and equipment, supporting you both on and off site. Our focus is on increasing safety, whilst improving your productivity.

We offer a wide range of products that will support you with:

- Passive fire protection
- Fire stopping, including sprinkler systems
- Structural steelwork protection
- Fire compartmentation
- Thermal insulation.

## Feature Products...



### Key Features



## Power Tower Push-around Mast Lift

**Hire Code: 020009**

This flexible machine helps users to work safely at heights of up to 5.1 m, whilst its compact footprint makes it a versatile option for multiple tasks, reducing costs and improving productivity.

- Simple to use battery operated machine; an environmentally friendly choice
- Large working platform makes this the ideal choice for users with multiple tools or equipment
- Compact footprint ensures it fits through standard doorways and passenger lifts
- Auto-lock wheels and audible ascent and drive sounds
- Easy access gate.



### Key Features



## HDPE Butt Fusion Welder

**Hire Code: 256055 / 256057**

Powerful, easy-to-carry and high-performance machine. Ideal for a range of plastic pipe installations.

- Suitable for work on-site and in the workshop
- Options available for 40-160 mm and 90-315 mm pipework
- Multiple pipe rest insert sizes
- Sheet steel base with installed drawer operating key
- Closed sheet steel underframe (transport box)
- Electronic temperature control
- Quick clamping device
- Pipe supports.



### Key Features



## Compact Cutting Station 900S Plus With Index Saw

**Hire Code: 310150**

The 900s Compact Cutting Station is designed to maximise safety through effective dust and noise reduction, whilst improving accessibility to tools across site with its easy manoeuvrability. Heavy-duty and weatherproof, this machine is fitted with a Ridgid 590L TCT Saw, alongside an additional built-in indexing turntable.

- Compact design, measuring just 900 mm width, 770 mm depth and 1860 mm height
- Powerful 2200W 110v chapsaw fixed to mitre index turntable
- Large cutting cross-section; 115 mm<sup>2</sup>, 130 mm Ø or 180 x 95 mm
- Quick acting clamp for efficient and accurate cutting
- Multiple blades available for every purpose
- Index table fitted with speed lock lever.



## Roll Groovers

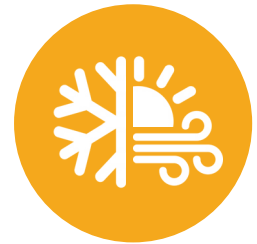
No matter whether you are grooving thin wall stainless, copper or thick walled carbon steel pipe, we stock a wide range of manufacturers recommended for roll groovers, including; Victaulic, Grinnel Gruvlok, SPF and VSH Shurjoint.



## Pressure Testers

A complete range of pressure testers from 1 - 100bar (14.5 - 1450 psi) are available for hydrostatic or air testing of pipework installations.





# Heating, Ventilation & Refrigeration (HVAC)

**We are focussed on delivering solutions that will enable you to become more efficient and productive, whilst giving you confidence that you're creating the right environment for your customers.**

Our hire solutions put safety at their heart, supporting your compliance requirements, whilst being easy to use and considerate to the environment.

We offer a complete range of solutions, including:

- LLA
- Ductwork testing
- Materials handling
- Site storage and security.



## Feature Products...



### Key Features



## StrutSlayr Strut Shear Head

**Hire Code: 220262 / 220265 / 220263**

StrutSlayr attaches to RIDGID® 32kN press tools to deliver a fab shop quality, burr-free cut in 5 seconds or less. No grinding or sawing sparks - just a clean, consistent shear cut with a pull of a trigger.

- Fab shop quality: Burr-free cuts eliminate the need for extra filing
- Increased efficiency: clean, consistent cuts in 5 seconds or less
- Shear Cut: no grinding or sawing sparks
- Portable: easy to move around site and mounts to RIDGID TRISTANDS
- Built-in measuring guide: allows accuracy of cuts on-site
- Available in two die head sizes (21x41 mm and 41x41 mm).



### Key Features



## Auto Braked Ductwork Rack

**Hire Code: 310130**

This Ductwork Rack offers a flexible, moveable, safe and timesaving solution to the problem of on-site ductwork storage. With a mandatory requirement to cover all ductwork stored on-site, this cleverly designed solution does just that; whilst helping you to improve efficiency, prevent accidents and reduce wastage costs.

- Wrap-over protective cover sheets – easily secured with bungee cords
- Easy, two person manoeuvrability
- 750 g load capacity
- Autobrake feature for added safety
- Adjustable, two tier storage.



### Key Features



## ALF150 Duct Leakage Tester

**Hire Code: 250168**

An all-in-one instrument, covering everything you need to test for air leakage under positive and negative pressure. It's quick, easy to use and weighs just 20 kg; meaning it's easy to manoeuvre around site.

- Instant results; data can be downloaded to an SD card or USB drive for your records
- Configure parameters to your needs, including; duct size, test pressure, test duration and class
- Fully calibrated with UKAS traceable certificate and user manual
- Power supplied via an 110V 50 / 60Hz AC connection.



### Key Features



## Spiral Duct Cutter With Nibbler

**Hire Code: 250042**

For cutting spiral ductwork on-site. Portable, with set-up in minutes, this cutter is suitable for cutting all types of spiral ductwork and can improve the efficiency of pipe installation on site. Saves time and costs and ensures clean cuts are delivered every time.

- Cuts spiral ductwork up to 0.9 mm in thickness
- Suitable for diameters of 80 – 315 mm
- Cuts lengths of up to 3 m.



### Key Features



## Alloy 250mm AGR Access Tower

**Hire Code: please contact us for details**

A versatile and easy to use EN1004 compliant scaffold tower, suitable for both internal and external use by up to two people.

- Reaches working heights of up to 14 m
- Compact advanced guardrail system
- Multiple height and width options available
- Lightweight and strong.





# Mechanical & Plumbing

**A trusted name in the industry, we offer high quality and innovative tools for all your pipework and plumbing applications. We stock industry leading brands from Novopress, Viega and Geberit to Ridgid, Rems, Victaulic and Rothenberger.**

We pride ourselves on being able to support all press-fit systems, sizes and materials with our extensive fleet. We also offer tools using the latest technologies, including Bluetooth, to help make your work more efficient and productive.

No matter what you want to achieve, we can help you with:

- Threading
- Cutting
- Grooving
- Freezing
- Bending
- Welding
- Pressure Testing
- Site storage and materials handling.



## Feature Products...



### Press-fit Tools

As one of the leading suppliers of press-fitting tools in the UK, we offer a full and extensive range from all major system manufacturers. Our fleet incorporates the latest in Bluetooth technology, allowing download of pressing history for your installations. With a full range of press guns, batteries, jaws and collars from press brands including; Geberit, Pegler Yorkshire, Conex Banninger and Viega, we are confident we stock the tools you need to increase your efficiency and productivity on site.



#### Key Features



### Ridgid 300 Compact Pipe Threading Machine Kit With Stand

**Hire Code: 250190**

This Ridgid 115V threading machine has a universal, 1,500 Watt reversible, single phase motor. It features recessed forward/off/reverse switches and an integral safety foot switch. The machine has a speed chuck with replaceable, rocker action jaw inserts and a single speed threader (38 rpm) with a rear-centering device and cam action.

- Supplied with: stand, universal die head, universal alloy die set, pipe cutter and cutter wheel, reamer, carriage with lever and oiler
- Pipe capacity: 1/8 - 2 inch (3 mm - 50 mm)
- Bolt capacity: 1/4 - 2 inch (6 mm - 50 mm)
- Spindle speed: 38 RPM
- Weight: 90 kg.



#### Key Features



### Viega Press Gun 6 Plus

**Hire Code: 255235**

With a rechargeable battery and Bluetooth interface, this press gun boasts high efficiency and modern technology.

- For all Viega system press jaws, rings, chains and (hinged) adapter jaws with PT2 interface, including press gun press booster
- 360° rotatable press jaw fixture
- Pressing force 32 KN.



#### Key Features



### Aquatechnik Expander Tool

**Hire Code: 255125 / 255130**

Compact and handy electric tool for fast expanding and calibration of tubes during installation.

- The longest service interval available for compact press tools (32,000 cycles)
- Powerful 18V Advanced Lithium 2 batteries that maximise presses per charge for more up-time
- 270° swivelling barrel to access tight spaces
- For use on Aquatechnik systems only
- For sizes 16-75 mm
- Built to CE Standard.



# Utilities & Fabricators

**We offer a wide range of tools that will support all of your utilities and fabricator needs.**

We have got you covered, no-matter what job you're facing, including:

- Electro-fusion equipment fitted with barcode readers and data download facilities
- Butt-fusion equipment
- Scrapers and squeeze-off tools
- Auxiliary products such as; stands, pipe supports, work benches and cutters.



## Feature Products...



### Key Features



## Pipe Bogey

**Hire Code: 360177**

Designed to be flipped on its side and, once pipe is loaded, can be flipped back onto its wheels to reduce manual handling issues.

- Capable of transporting up to 6.1 m of pipe weighing up to 450 kg
- Welded construction with a powder-coated finish
- Detachable steering arm for ease of storage
- Two heavy duty, solid rubber tyre wheels
- Load tested to 500 kg.



### Key Features



## Welding Tent

**Hire Code: 340150**

Keep welding on-site in all weathers with this quick and easy to erect tent from Wilkinson Star.

- Fast to put up
- Offers greater flexibility for welding on-site
- Water tight and wind-proof
- Flame retardant reinforced PVC or canvas
- Conforms to EN1598.



## Brugg Pipework

**Hire Code: please contact us for details**

We offer a range of Brugg Pipework products for various applications in press-fitting, covering press systems including: Brugg, Calpex, Everloc, Jentro, PEX and Rehau.



- Heating
- Industrial systems
- Filling and tank stations
- Cryogenic applications
- Bio Fermenter heating.

We offer a full range of hire products covering; access, press fit and pipe work to cable tools, materials handling, tool tethering and PPE. **For further information on our full range of products, please get in touch.**



# Health & Safety Guidance

Our in-house experts can guide you through your safety obligations; helping you to be compliant and keep your workforce safe...





## Risk Assessment

As an employer, you are required by law to protect your employees, and others, from harm.



Identify your risks:

- Pin-point what could cause injury or illness in your business (hazards)
- Decide how likely it is that someone could be harmed and how seriously (the risk)
- Take action to eliminate the hazard, or if this isn't possible, control the risk.

You can find more information on the HSE website: [www.hse.gov.uk/simple-health-safety/risk](http://www.hse.gov.uk/simple-health-safety/risk)

**We can offer you guidance and support around better managing your risks, such as falling from heights.**



## Noise Reduction

There are many ways of reducing noise and noise exposure - often a combination of methods works best.



First think about how to remove the loud noise altogether. If that is not possible, do all you can to control the noise at source, consider taking measures to protect individual workers where needed.

Further information can be found on the HSE website at: [www.hse.gov.uk/noise](http://www.hse.gov.uk/noise)

**We can support you with innovative solutions for noise reduction on your sites, including our cutting stations and Personal Protective Equipment (PPE).**



## Hand Arm Vibration (HAVS)

HAVS can be a significant health risk wherever powered hand tools are used for significant lengths of time.



A serious and disabling issue, nearly 2 million people are thought to be at risk. Damage from HAVS can include the inability to do fine work and can trigger painful finger blanching attacks. It is preventable, but once the damage is done, it is permanent. Under the Control of Vibration at Work Regulations 2005, employers must assess and identify measures to eliminate or reduce risks from exposures to harmful vibration.

There are steps that you can take to manage the risk of HAVS in your workplace and more information is available on the HSE website at: [www.hse.gov.uk/vibration/hav](http://www.hse.gov.uk/vibration/hav)

**We can offer support and guidance on the best machinery to use to reduce the risks of HAVS.**



## Dust

Dust is tiny, dry particles in the air that are produced when materials are cut, drilled, demolished or sanded etc.



Dust is not always an obvious health hazard, as the particles which cause the most damage are often invisible to the naked eye. The health effects of exposure can take many years to develop.

Information on controlling exposure to dust in the workplace can be found on the HSE website at: [www.hse.gov.uk/dust](http://www.hse.gov.uk/dust)

**If you are unsure what solutions you could implement to reduce the risk of exposure to dust then ask our experts.**

## A trusted and recognised hire partnership...





# SBS Branches



With 21 locations spread across the UK, we truly have national coverage.

## SBS BIRMINGHAM

Unit 4 Alpha Park, Bevan Way  
Smethwick, West Midlands  
B66 1BZ

**T:** 0121 555 1900  
**E:** birmingham@sbs.co.uk

## SBS BRISTOL

Unit B Vincents Trading Estate  
Feeder Road, Bristol  
BS2 0UY

**T:** 0117 947 1111  
**E:** bristol@sbs.co.uk

## SBS CAMBRIDGE

Unit 20 Buckingham Business Park  
Anderson Road, Swavesey  
Cambridge CB24 4AE

**T:** 0122 362 0926  
**E:** cambridge@sbs.co.uk

## SBS CARDIFF

Unit 2 Dominions Way Industrial  
Estate, Newport Road, Cardiff  
CF24 1RF

**T:** 0292 167 1250  
**E:** cardiff@sbs.co.uk

## SBS DUNDEE

Unit R Claverhouse Industrial Park  
Charles Bowman Avenue, Dundee  
DD4 9UB

**T:** 0138 221 3600  
**E:** dundee@sbs.co.uk

## SBS EXETER

Units B1 - B3 Sanderling Court,  
Sowton Industrial Estate Exeter  
EX2 7PJ

**T:** 0139 234 3210  
**E:** exeter@sbs.co.uk

## SBS GLASGOW

Unit 501 Clyde Gateway East  
London Road, Glasgow  
G32 8RH

**T:** 0141 739 0060  
**E:** glasgow@sbs.co.uk

## SBS HEATHROW (LONDON WEST)

Unit 2 Pier Road, Feltham  
Greater London  
TW14 0TW

**T:** 0203 856 5620  
**E:** heathrow@sbs.co.uk

## SBS HIGH WYCOMBE

Unit B, 2 Thomas Road, Wooburn  
Industrial Park, Wooburn Green  
High Wycombe HP10 0PE

**T:** 0149 432 6926  
**E:** highwycombe@sbs.co.uk

## SBS HULL

Unit 1 Stockholm Road, Hull  
HU7 0XY

**T:** 0148 242 4333  
**E:** hull@sbs.co.uk

## SBS LEEDS

Unit 1 Quantum Business Park  
Pontefract Road, Stourton, Leeds  
LS10 1AX

**T:** 0113 201 4222  
**E:** leeds@sbs.co.uk

## SBS LEICESTER

99 Commercial Square,  
Freemen's Common Industrial  
Estate, Leicester LE2 7SR

**T:** 0116 222 7355  
**E:** leicester@sbs.co.uk

## SBS MERSEYSIDE

Unit 6 Turbine Road  
Tranmere, Birkenhead, Wirral  
CH41 9BA

**T:** 0151 541 6440  
**E:** merseyside@sbs.co.uk

## SBS NEWCASTLE

Unit C11 The Avenues  
Eleventh Avenue North, Team Valley  
Gateshead NE11 0NJ

**T:** 0191 917 9922  
**E:** newcastle@sbs.co.uk

## SBS NORTHAMPTON

Unit 3 Reynoldston Close  
Brackmills Industrial Estate  
Northampton NN4 7BX

**T:** 0160 476 3621  
**E:** northampton@sbs.co.uk

## SBS NOTTINGHAM

Unit 5 Freeston Drive, Blenheim  
Industrial Estate, Nottingham  
NG6 8UZ

**T:** 0115 822 3696  
**E:** nottingham@sbs.co.uk

## SBS OLDHAM

Units A & B Vulcan Business Park  
Derker Street, Oldham  
OL1 4AS

**T:** 0161 621 6288  
**E:** oldham@sbs.co.uk

## SBS PETERBOROUGH

Empson Road, Eastern Industry  
Peterborough  
PE1 5UP

**T:** 0173 331 1711  
**E:** peterborough@sbs.co.uk

## SBS RAINHAM (LONDON EAST)

Unit 3 Avocet Park,  
Ferry Lane North, Rainham  
Essex RM13 9DD

**T:** 0170 868 9900  
**E:** london@sbs.co.uk

## SBS SHEFFIELD

Units 4 & 5 Tinsley Park Close  
Sheffield, South Yorkshire  
S9 5DE

**T:** 0114 553 6500  
**E:** sheffield@sbs.co.uk

## SBS SOUTHAMPTON

Unit F Omega Enterprise Park  
Electron Way, Chandlers Ford  
Eastleigh SO53 4SE

**T:** 0238 062 3070  
**E:** southampton@sbs.co.uk



Smith Brothers Stores in partnership with:



**MEP Hire**

Mechanical, Electrical & Low Level Access Specialists

☎ 0844 892 1902

@ sbs.hirestation@vpplc.com

**MEP Hire Head Office**

Unit K, Ashley Drive, Bothwell, Glasgow G71 8BS  
**mephire.co.uk**



Printed on carbon balanced  
and sustainably sourced paper